

**ROCAMORA TEATRE**

# **IDENTITATS**



## **TECHNICAL SPECIFICATIONS INDOOR**

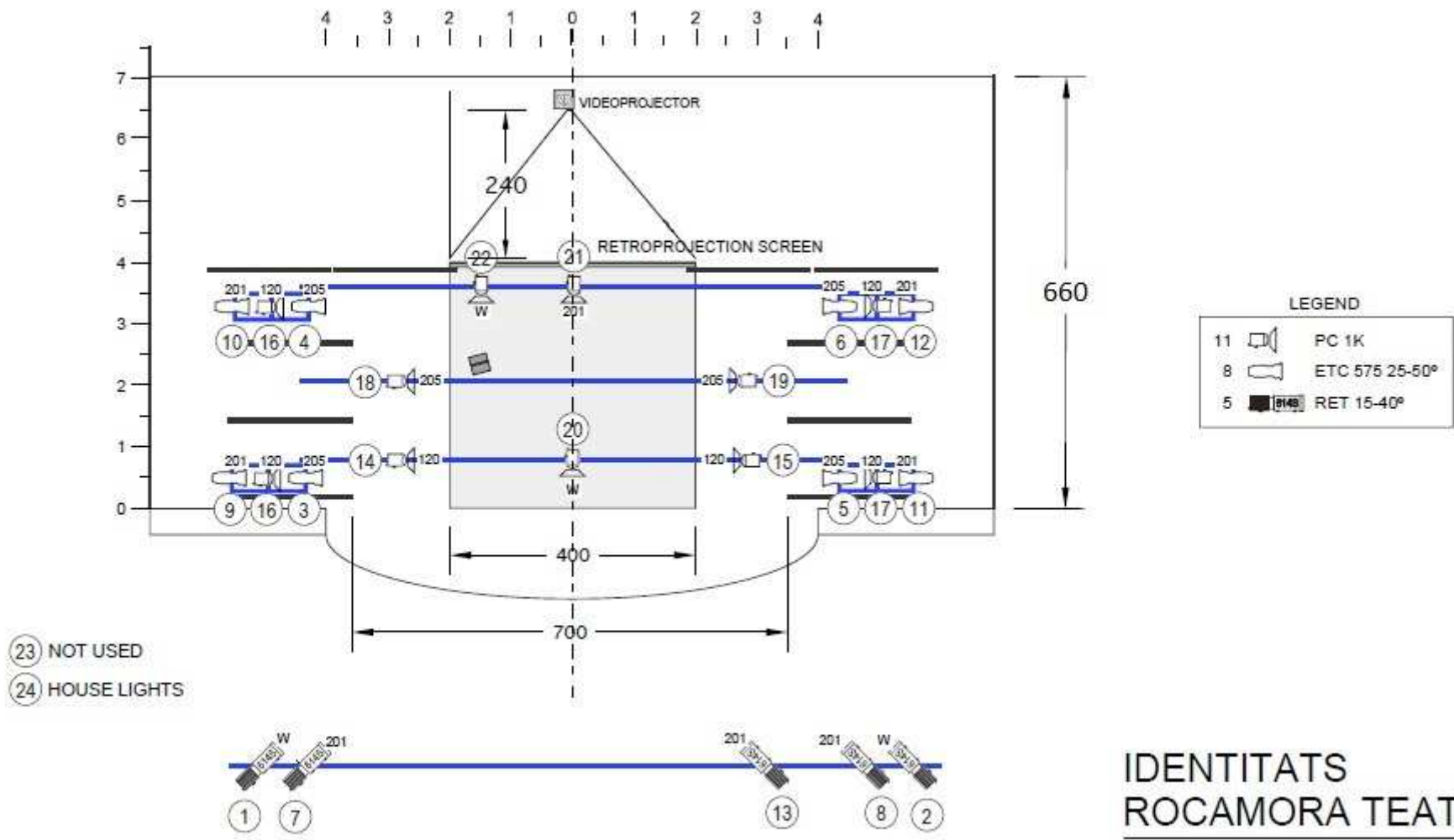
**DURATION:** performance: 61 min / stage set up: 2:30 hours / dismantling: 1 hour.

**AUDIENCE:** for the young (+10) and adults / maximum recommended capacity 500 people.

**SCENIC SPACE:** dark indoor / black box theatre with legs and borders with back-curtain adjusted to the retro projection screen of 4m wide x 2,25m high (we could bring) / in parterre, stage approximately 1m-1,10m high.

**minimal measures:** the acting area is 4 x 4m (with smooth wooden floor, not linoleum). More 2,60m for the retro projection and the video projector 3500 ANSI Lumens ultra-short throw 16:9 (we could bring). More 2m by side to place the spotlights for the lateral light areas. Height stage: 3m.

**SOUND & LIGHTING CONTROL:** We control audio, video and lighting from our MacBook (located on one side stage). To do this, we bring with us: (A) a cable with 3.5mm stereo jack to connect at the MacBook and that ends with two CANNON (L-R) to connect to your PA system. (B) a 15m VGA cable to connect the MacBook with the video retro-projector. (C) a Enttec DMX USB Pro Interface, to connect our MacBook to your DMX lighting control system.



IDENTITATS  
 ROCAMORA TEATRE  
 LIGHTING PLANT

\*measurements in meters